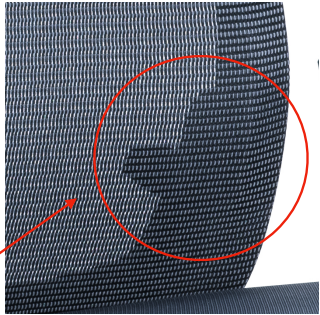


PAPILLON CHAIR USER GUIDE



MOVE THE SIDE SUPPORT TO ADJUST LUMBAR POSITION



PULL TO ACTIVATE SEAT SLIDING FUNCTION

TURN TO ACTIVATE GAS AND REGULATE CHAIR HEIGHT

TURN TO TIGHTEN OR LOWER THE BACKREST TENSION



MOVE THE PAD TO ADJUST SIDE AND FRONT POSITION OF THE ARMREST
PUSH THE ACTIVATOR TO ADJUST THE HEIGHT